

Mounting Handrail Posts

1E Printed 20 NOV 2013



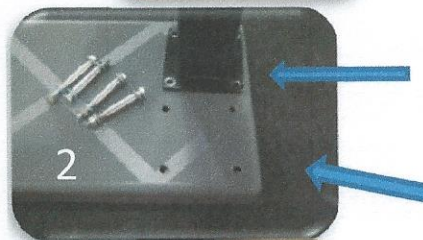
← The Safest Step You'll Take →



Step 1 – Illustration 1

Locate and square up post by laying the ComposiGrip step face down
Push 2 pieces of 1/2" plywood into the channel near the corner where you want to mount the post

Place the post base in the corner tight up against the wood
Center punch your hole locations. Holes must be drilled straight through for all parts to align. Drilling the step on a drill press is recommended
If you are not equipped to do this, Comoldco can supply predrilled steps by special order.



Step 2 – Illustration 2

In some cases it may be necessary to enlarge the existing holes in the lower base of the handrail posts. (these holes should be drilled 21/64" to clear the 5/16" mounting hardware)
4 holes also need to be drilled through the step to align with the handrail posts holes (these holes need to be drilled 27/64" for a snug fit on the sleeves)



Step 3 – Illustration 3

Place one washer on a bolt & drop it through post and step holes



Step 4 – Illustration 4

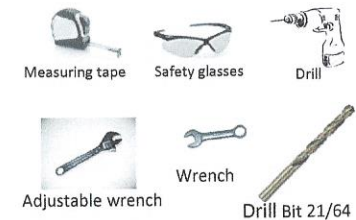
Push sleeve up around bolt and into step hole



Step 5 – Illustration 5

Attach in this order: flat washer, lock washer, nut
Do the same for all 4 bolts then tighten evenly
If the posts are leaning, washers can be added between the post and step holes to level them

Required Tools



Materials Required

Railing System (not included)
Hardware for rail posts
(Available from Comoldco)



Handrail post mounting hardware (per post)

4 x 5/16" N/C bolts 2.5" to 3.5" long (depends on brand of post used)
4 x 5/16" N/C Nuts
8 x 5/16" flat washers
4 x 5/16" ID x 1.750" long Buttite spacers # 607-107
Recommend stainless, galvanized or coated for outdoor installation.
Kits are available through Comoldco

Comoldco Corporation

www.comoldco.com



Made in Canada

Full Step Installation

2E Printed 20 NOV 2013



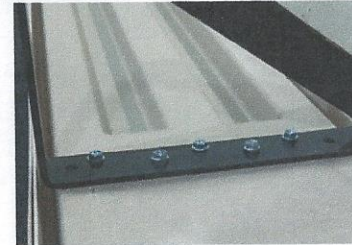
The Safest Step You'll Ever Take



Wood

Mounting the Steps

Ten screws are supplied to fasten step to stringer



Steel

Five screws per mounting pad should be used to secure the step. The step can be used with many common stringer styles. Here are a few examples with recommended fastener patterns.



Aluminum



Required Tools



Drill/Driver



Tape measure



Bevel square



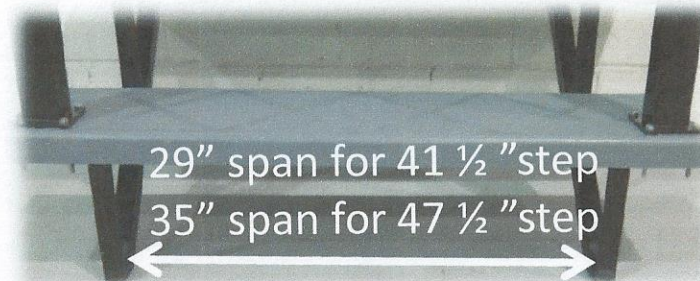
Safety glasses



3/8" Hex drive socket
With extension

Stringer Placement

Recommended Stringer span of 29" for 41 1/2" step to 35" for 47 1/2" step.
This will provide maximum strength and room to mount handrail posts.



Materials Required
Self tapping Screws
(10 included with your step)
Stair Stringers (not included)

Comoldco Corporation
www.comoldco.com



Made in Canada

Step Cover Installation On Concrete

3E Printed 20 NOV 2013



Concrete Landing

BEFORE/AFTER

Concrete Step



Installation on existing concrete steps

Step 1: Prepare –

Remove any existing coverings from stairs (if applicable). Remove nails, staples and stair nosing. Lightly wire brush the existing steps or sand if required. Surface should be smooth and void of any large imperfections (see warranty notes below)

Lightly sand the back of the ComposiGrip step cover

Wipe down both surfaces with acetone, paint thinner or similar cleaner.

Ensure all surfaces are clean, dry and free of dust before proceeding

Step 2: Install - Before cutting step cover, ensure pattern match

Measure the length and width of the existing stair tread. Transfer the measurement to the ComposiGrip step cover and cut accordingly. A circular saw can be used for the majority of the cuts. We recommend using diamond grit tile-cutting blades for cleanest cut.

For indoor applications

Apply the construction adhesive to the back of the step cover following construction adhesive recommendations

Using a 3/16 x 3/16" adhesive spreader apply adhesive evenly across the entire backside of cover.

Place cover in desired location firmly pushing down on to existing step. Once properly located clamp or place weight evenly distributed on the cover. Follow adhesive manufacturer's recommendation for clamping/curing time.

Outdoor applications

We recommend adding masonry fasteners; minimum 1.25" long.

Drill clearance holes for the stainless steel or coated masonry fasteners.

Fasten step cover to the existing stair tread. Ensure the step cover is level and squared. Use a minimum of 5 fasteners per step cover and fasten in an 'X' format (2 at each end and 1 in the middle).

Step 3: Finish - Optional

Fill the holes with matching color silicone

Installation on existing concrete landing

Step 1: Prepare –

Remove any existing landing coverings (if applicable). Remove nails, staples and stair nosing

Lightly wire brush or sand the existing landing

Lightly sand the back of the ComposiGrip flat sheet

Wipe down both surfaces with acetone, paint thinner or similar cleaner

Ensure all surfaces are clean, dry and free of dust before proceeding

Step 2: Install - Before cutting flat sheet, ensure pattern match

We recommend adding masonry fasteners; minimum 1.25" long. Measure the length and width of the existing landing. Transfer the measurement to the ComposiGrip flat sheet & cut accordingly. A circular saw can be used for the majority of the cuts. We recommend using diamond grit tile-cutting blades for cleanest cut. Drill clearance holes for the stainless steel or coated masonry fasteners. Apply the construction adhesive to the back of the flat sheet following construction adhesive recommendations. Using a 3/16 x 3/16" adhesive spreader apply adhesive evenly across the entire backside of sheet. Fasten sheet to the existing landing with stainless steel masonry fastener. Ensure the sheet is level and squared. Use a minimum of 5 fasteners per sheet and fasten in an 'X' format (2 at each end and 1 in the middle).

Step 3: Finish – Optional

Fill the holes with matching color silicone

Improper Installation will Void the Warranty: ComposiGrip Step Covers are NOT structural parts and are NOT designed to support full load of step. The load-bearing capacity of each Step Cover is dependent upon the load-bearing capacity of the step it is covering. Step Cover is not designed to bridge large voids or gaps. Deteriorated steps should be filled or levelled prior to installation of Step Covers. All voids larger than 2-inch (5 cm) diameter should be filled. Installations on highpoint load applications (such as 'Bear-Claw' style gratings) should be made using ComposiGrip high strength Industrial Step Covers.

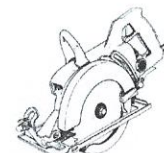
Required Tools



Jig Saw



Caulking Gun



Circular Saw



Hammer



Drill



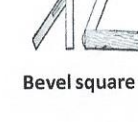
Measuring tape



Bevel square



Safety glasses



Adhesive Spreader

Materials Required

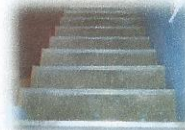
Masonry Fasteners
Construction adhesive
Caulking
Acetone

Comoldco Corporation 
www.comoldco.com

Made in Canada

Step cover Installation on Wood, Steel, etc.

4E Printed 20 NOV 2013



PT Deck Stairs

BEFORE/AFTER

Basement Stairs



Installation over wood or steel etc.



Step 1: Prepare –

Remove any existing coverings from stairs (if applicable). Remove nails, staples and stair nosing. Lightly wire brush the existing steps or sand if required. Surface should be smooth and void of any large imperfections (see warranty notes below).

Lightly sand the back of the ComposiGrip step cover. Wipe down both surfaces with acetone, paint thinner or similar cleaner. Ensure all surfaces are clean, dry and free of dust before proceeding.

Step 2: Install – Before cutting step cover, ensure pattern match

Measure the length and width of the existing stair tread. Transfer the measurement to the ComposiGrip step cover and cut accordingly. A circular saw can be used for the majority of the cuts. We recommend using diamond grit tile-cutting blades for cleanest cut.

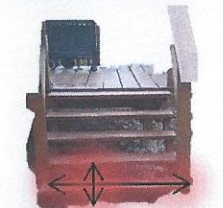
For indoor applications

Apply the construction adhesive to the back of the step cover following construction adhesive recommendations. Using a 3/16 x 3/16" adhesive spreader apply adhesive evenly across the entire backside of cover. Place cover in desired location firmly pushing down on to existing step. Once properly located clamp or place weight evenly distributed on the cover. Follow adhesive manufacturer's recommendation for clamping/curing time.

Outdoor applications

We recommend adding stainless or coated fasteners; minimum 1.25" long. Drill clearance holes for the stainless steel or coated fasteners. Fasten step cover to the existing stair tread. Ensure the step cover is level and squared. Use a minimum of 5 fasteners per step cover and fasten in an 'X' format (2 at each end and 1 in the middle).

Step 3: Finish - Optional Fill the holes with matching color silicone



Installation on landing

Step 1: Prepare –

Remove any existing landing coverings (if applicable). Remove nails, staples and stair nosing. Lightly wire brush or sand the existing landing. Lightly sand the back of the ComposiGrip flat sheet. Wipe down both surfaces with acetone, paint thinner or similar cleaner. Ensure all surfaces are clean, dry and free of dust before proceeding.

Step 2: Install - Before cutting flat sheet, ensure pattern match

We recommend adding stainless or coated fasteners; minimum 1.25" long. Measure the length and width of the existing landing. Transfer the measurement to the ComposiGrip flat sheet & cut accordingly. A circular saw can be used for the majority of the cuts. We recommend using diamond grit tile-cutting blades for cleanest cut. Drill clearance holes for the stainless steel or coated fasteners. Apply the construction adhesive to the back of the flat sheet following construction adhesive recommendations. Using a 3/16 x 3/16" adhesive spreader apply adhesive evenly across the entire backside of sheet. Fasten sheet to the existing landing with stainless steel fastener. Ensure the sheet is level and squared. Use a minimum of 5 fasteners per sheet and fasten in an 'X' format (2 at each end and 1 in the middle).

Step 3: Finish – Optional Fill the holes with matching color silicone

Improper Installation will Void the Warranty: ComposiGrip Step Covers are NOT structural parts and are NOT designed to support full load of step. The load-bearing capacity of each Step Cover is dependent upon the load-bearing capacity of the step it is covering. Step Cover is not designed to bridge large voids or gaps. Deteriorated steps should be filled or levelled prior to installation of Step Covers. All voids larger than 2-inch (5 cm) diameter should be filled. Installations on highpoint load applications (such as 'Bear-Claw' style gratings) should be made using ComposiGrip high strength Industrial Step Covers.

Required Tools



Materials Required

- Fasteners
- Construction adhesive
- Caulking
- Acetone

Comoldco Corporation
www.comoldco.com



Made in Canada

Individual cover and base Installation

5E Printed 20 NOV 2013



← The Safest Step You'll Ever Take →



1) Install stringers at these recommended centers: 29" for the 41 ½" step and 35" for the 47 ½" step. This provides mounting space for handrail systems



2) Place cover over base. Using a tape measure, mark center of step. Use this mark to center the step over the stringers. Leave space at back of step so that cover is easy to install and to ensure cover is not touching back of stringer.



3) When step is centered, reach underneath with a black marker and mark the stringer hole locations on the step. Flip the step over and drill a minimum of two 5/16" clearance holes in each end, to mount the step to the stringers.



4) Secure the base to the stringer using a 5/16" bolt with a flat washer against the base. Nut & lock washer on the stringer side. Tighten securely.



5) Before bonding the cover to the base, both sides should be lightly sanded enough to break the surface. Sand the top of the 2 main ribs & top of the entire peripheral rib of the base. Sand the cover in the same areas. There are dots on the cover indicating where to sand & locate adhesive. Ensure all surfaces are clean, dry and free of dust before proceeding.



6) Bond the two parts together, using a good quality waterproof interior/exterior Silicone Sealer or suitable construction adhesive. Take the cover and lay it 'show side' down. Apply a generous bead of sealer or adhesive in the same areas previously sanded, around the periphery & on top of the 2 ribs. Flip cover over & place it on top of the base. Clamp the cover to the base (or apply weight to the cover), ensuring the outer edges of both cover and base are flush. Refer to sealer/adhesive manufacturer's directions for cure temperature & time



Required Tools



Drill



Measuring tape



Safety glasses



Black Marker



1/2" Hex drive socket
With extension

Materials (not included)

4 ea. 5/16" x 1" NC bolts, nuts, lock & flat washers(not incl)
Silicone, waterproof int/ext
Stair Stringers (not included)

Comoldco Corporation

www.comoldco.com



Made in Canada